

## Fare Structure for Local Fixed Routes

### General Public

Cash (single trip)	\$ 1.00
10 Ride Pass	\$ 9.00
Monthly Pass	\$ 45.00

### Seniors, Youths, Peoples with a disability or Medicaid Card

Cash (single trip)	\$ 0.50
10 Ride Pass	\$ 4.50
Monthly Pass	\$ 22.50

Current KSU Students, Staff & Faculty with KSU ID Ride **FREE** (Not Valid for Express Route or Door to Door Services.)

**\* DRIVERS DO NOT CARRY CHANGE.  
PLEASE HAVE YOUR FARE READY WHEN  
BOARDING THE BUS.**

PARTA provides no service on the following observed holidays.

**New Years Day**      **Labor Day**  
(January)                      (September)

**Memorial Day**      **Thanksgiving Day**  
(May)                      (November)

**Independence Day**      **Christmas Day**  
(July)                      (December)

**Tickets/Passes** may be purchased at any Portage County Huntington National Bank, the Burbick Center, The PARTA offices, online, or by calling and requesting a mail order form.



S E R V I C I N G  
P O R T A G E   C O U N T Y

2000 Summit Rd  
Kent, OH 44240  
[www.partaonline.org](http://www.partaonline.org)

Local Calls: 330-678-1287  
Long Distance: 877-743-3782  
Ohio Relay Service TTY: 800-750-0750  
PARTA TTY: 330-676-5100

**WINDHAM/      ROUTE NUMBERS  
GARRETTSVILLE      71/72**

**Effective: January 29, 2012  
Monday– Friday**

### Routes 71/72 Service

- Robinson Memorial Hospital
- Freedom Town Hall
- Windham Community Center
- Maple Grove Community
- Sky Plaza
- Garrettsville Village
- Garfield Plaza
- Hiram Village
- Hiram College



**330-678-1287**

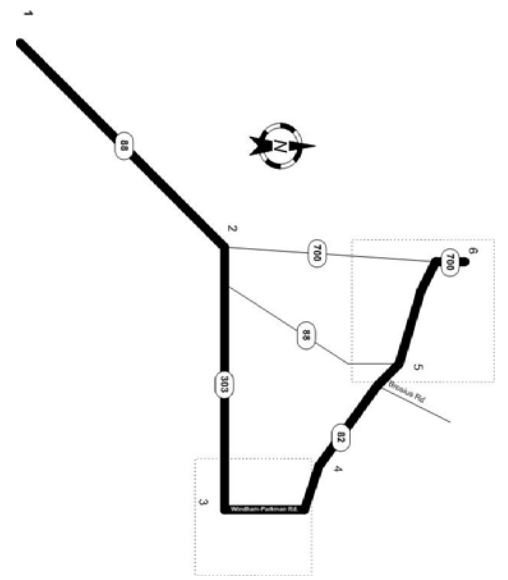


All PARTA busses are accessible to wheelchairs.

PARTA does not discriminate in provision of services or employment because of handicap, race, color, creed, national origin, sex or age.

Windham/Garrettsville	Servicing Ravenna-Freedom-Windham-Garrettsville-Hiram														
71 Northbound	72 Southbound														
Portage County Administrative Building (PCAB)	Robinson Memorial Hospital	Social Security Administration	Freedom Township Hall	SR 303 & Maple Grove Rd	PM Estates	Garrettsville's Garfield Plaza	Hiram College Dean St. & Bancroft St.	Hiram College St. and Bancroft St.	Garrettsville's Garfield Plaza	PM Estates	SR 303 & Maple Grove Rd	Freedom Township Hall	Social Security Administration	Robinson Memorial Hospital	Portage County Administrative Building (PCAB)
*	6:18	*	6:28	6:36	6:39	6:46	7:03	7:03	7:10	7:14	7:22	7:32	7:44	7:46	7:55
7:56	8:05	8:08	8:18	8:26	8:29	8:36	8:46	8:48	8:55	8:59	9:07	9:17	9:29	9:31	*
*	9:31	*	9:41	9:49	9:52	9:59	10:11	10:14	10:21	10:25	10:33	10:43	*	10:55	*
*	11:00	11:03	11:13	11:21	*	*	*	*	*	*	11:21	11:31	11:43	11:45	*
*	11:45	11:48	11:58	12:06	12:09	12:16	12:28	12:32	12:39	12:43	12:51	1:01	1:13	1:15	*
*	1:20	*	1:30	1:38	*	*	*	*	*	*	1:38	1:48	*	2:00	*
*	2:02	*	2:12	2:20	2:23	2:30	2:42	2:43	2:50	2:54	3:02	3:12	*	3:28	*
*	3:30	*	3:40	3:48	3:51	3:58	*	*	4:00	4:04	4:12	4:22	4:38	4:40	*
*	5:10	5:13	5:23	5:31	5:34	5:41	5:51	5:51	5:58	6:02	6:10	6:20	*	6:36 Z	*

\* This stop is not serviced on this trip  
 Z Route ends at this point



Monday through Friday

