

PARTA Route 35, 40, & 57 Detours

Saturday, October 21

Kent State University will hold its Homecoming parade on Saturday, October 21. Main Street will be closed from Midway to Water Street. The parade starts at 10:30 AM and is expected to be complete by noon.

However, the road will be closed from **7:00 AM until 1:00 PM**.

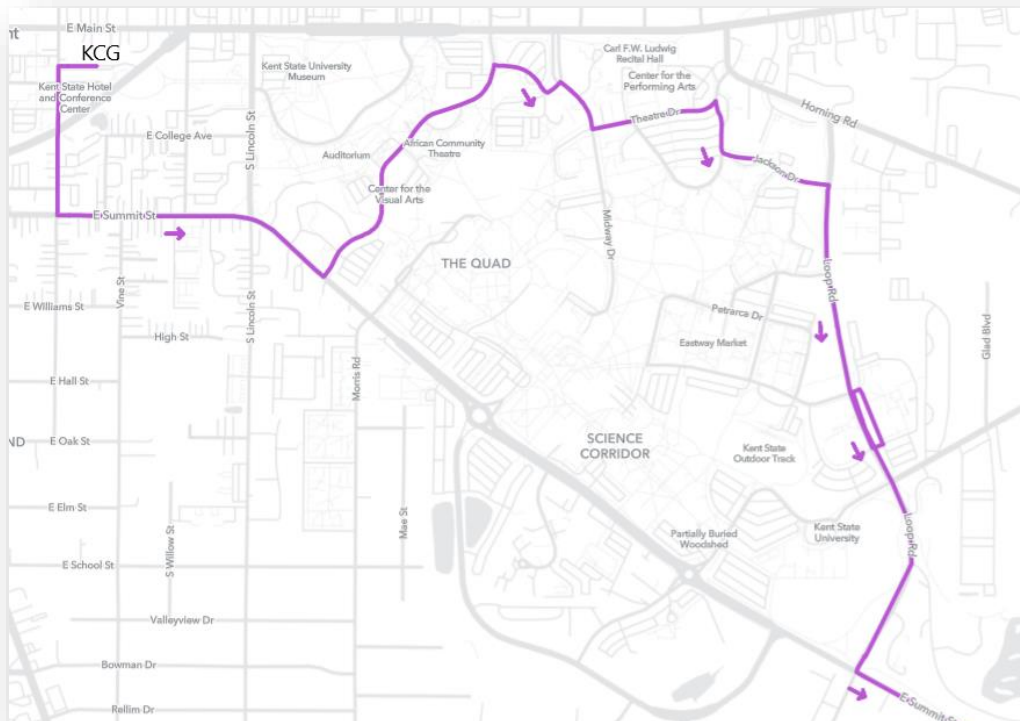
Route 35 SAT, 40, and 57 will be on detour for the duration of the road closure. Detour details are below.

57 Stadium Loop Inbound to Dix Stadium

From Kent Central Gateway
Left on Depeyster St.
Left on Summit St.
Left on Terrace Dr.
Right on Midway Dr.
Resume Route

Missed Stops

540 Architecture & ENV Design SB
500 Franklin Hall
501 Cartwright Hall



35 SAT Interurban East Outbound

From KCG

Left on Depeyster St.
Right on Haymaker Pkwy
Right on River St. (continue on Gougler Ave.)
Right on Fairchild Ave.
Left on Water St.
Right on Lake St.
Right on 2nd Ave.
Left on Ohio St. (continue on 6th Ave.)
Left on Main St. (Resume Route)

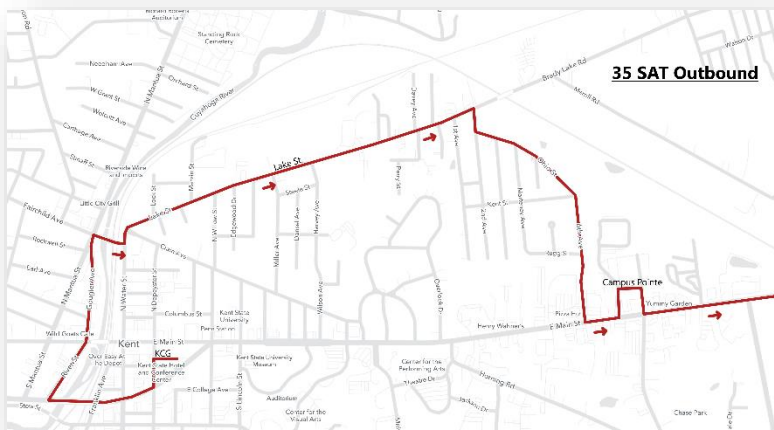
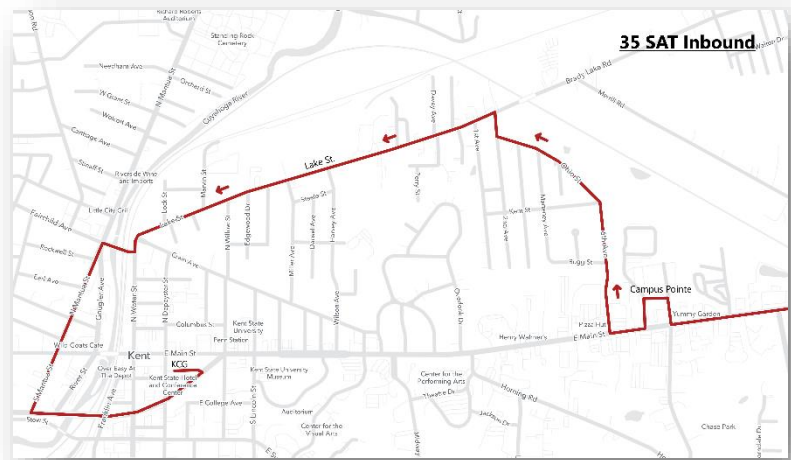
35 SAT Interurban East Inbound

From Main St.

Right on 6th St. (continue on Ohio St.)
Right on 2nd Ave.
Left on Lake St.
Left on Water St.
Right on Fairchild Ave.
Left on Mantua St.
Left on Haymaker Pkwy
Left into KCG

Missed Stops

665 Main & Lincoln EB
502 Moulton Hall
830 Main & Horning EB
1079 Main & Kent UCC EB
664 Main & Dale EB
752 Main & Holy Park EB
663 Main & 6th EB
600 Main & Dale WB
754 Main & Horning WB
539 Main & Linden WB
603 Main & Lincoln WB



The operator will service the stops on Lake St. and Ohio St./6th Ave. since the Route 40 bus will not be able to service them. This will ensure passengers in this area still have access to bus service during the detour.

40 Suburban North Outbound

From KCG

- Left on Depeyster St.
- Right on Haymaker Pkwy
- Right on River St. (continue on Gougler Ave.)
- (AM) Left on Fairchild Ave.
- (AM) Right on Hudson Rd. (Resume Route)
- (PM) Continue straight on Mantua St. (Resume Route)

40 Suburban North Inbound

From Roosevelt HS

- (AM) Right on Mantua St.
- (PM) Left on Hudson St.
- (PM) Left on Fairchild Ave.
- (PM) Right on Mantua St.
- Left on Haymaker Pkwy
- Left into KCG

Missed Stops

There are no additional missed stops since route 35
SAT Interurban East will pick up the stops on Lake St.,
Ohio St., and 6th Ave.

